



Product Service

EC-Type Examination Certificate

No. P5 16 08 55625 005

Holder of Certificate: MKL - Technik GmbHAm Langacker 20
95233 Helmbrechts
GERMANY**Product:****PPE against fall from a height
Guided type fall arrester incl. rigid anchor line, EN
353-1****Model(s):****Twinstop® (200000G)****Parameters:**

Versions:

Guided Type Fall Arrester in combination with 3 different
rigid anchor lines (+15° forward leaning angle and 15°
sideway leaning angle are allowed):- aluminium fall arrest ladder (catalog art.-no.: 200282,
200283, 200340 and 200341; drawing art.-no.: 200277B)- hot dip galvanized steel fall arrest rail (catalog art.-
no.: 200178, 200200, 200201, 200202 and 200203; drawing
art.-no.: 200177)- stainless steel fall arrest rail (catalog art.-no.:
200180, 200190, 200191, 200204 and 200205; drawing art.-
no.: 200179)

More Parameters: see Annex

This EC-Type Examination Certificate is issued according to Article 10 of Council Directive 89/686/EEC for personal protective equipment as classified in Article 8 (PPE of category 3). It confirms that the listed product fulfills the basic requirements as specified in Annex II of the Directive. This certificate refers only to the sample submitted to TÜV SÜD Product Service GmbH for testing and certification and on its technical documentation. See also notes overleaf.

Test report no.: 713068624**Valid until:** 2021-08-02**Date,** 2016-08-03
(Volker Kron)

TÜV SÜD Product Service GmbH is Notified Body according to Council Directive 89/686/EEC for personal protective equipment, notified by publication in the Official Journal of the EC No. C 203/44 dated July 07th, 1994 with identification No. 0123.

Page 1 of 6

Annex to

EC-Type Examination Certificate

No.: P5 16 08 55625 005

Twinstop® (200000G)

- Function principle: The Guided type fall arrester Twinstop® (200000G) can be Placed from the top or the bottom onto the rail;
The free fall of the user is stopped by 2 function principles (the guided type fall arrester blocks):
- Main blocking function – activated by force (spring-driven)
 - Redundant blocking system – the joint swings via a lever which is driven by inertia (speed-driven);
- The Guided type fall arrester includes a stainless steel energy absorber and an oval aluminium connector (DMM – A327) modified by MKL-Technik with a DIN 3771 EPDM rubber ring ø10mm x 5mm, glued to connector with LOCTITE 3090 to guarantees the directional use and the permanent attachment of the connector to the fall arrester);
- Fall arrest rail: fall arrest rail (a safety connection between the rail and a ladder or a wall has to be guaranteed by the manufacturer) with fixed and movable stop devices A and B, joints, brackets, fixation elements;
- aluminium fall arrest ladder (drawing art.-no.: 200277B): c-profile (only as ladder); 51mm x 52mm; 4mm to 5mm thick; with 20mm x 25mm arrest bars over the total width of the ladder each 140mm; with 2 pc. 13mm x 30mm fixation square holes with a distance of 17mm to each other, each 140mm; incl. steel fix stop device A=B (U-profile; 50mm x 53,50mm x 25mm; 3mm thick; incl. 1 pc. hole 13mm x 13mm; fixed to rail over 1 pc. steel bolt M12x90); movable stainless steel stop device A (marked with "STOP up") and movable stainless steel stop devices B (marked with "STOP down") fixed to rail each over 1pc. steel bolt M12x40, aluminium brackets (141,40 x 141,18mm; 4mm to 7mm thick; incl. 1pc. hole 13mm x 45mm and 1pc. hole 18mm x 50mm; fixed to rail over 1pc. steel bolt M12x40) and steel joint (made of an inner and an outer profile connecting element; outer: U-profile; 253mm x 53,3mm x 30mm; 3mm thick; incl. 2pc. holes 13mm x 16mm; inner: angled (45°) steel plate; 108,76mm x 32mm; 3mm thick; incl. 2pc. holes 13mm x 16mm; fixed to rail over 2pc. steel bolts M12x40)
 - hot dip galvanized steel fall arrest rail (drawing art.-no.:200177): c-profile rail (as rail or as ladder); 31,50mm x 50mm; 3mm thick; with 24mm x 16mm arrest clips with a height of 8,5mm each 140mm; with 2 pc. 13mm x 35mm



Product Service

fixation square holes with a distance of 12mm to each other, each 140mm; incl. steel fix stop device A=B (U-profile; 50mm x 53,50mm x 25mm; 3mm thick; incl. 1 pc. hole 13mm x 13mm; fixed to rail over 1 pc. steel bolt M12x60); movable stainless steel stop device A (marked with "STOP up") and movable stainless steel stop devices B (marked with "STOP down") fixed to rail each over 1pc. steel bolt M12x35, steel brackets (160mm x 132mm x 78mm; 12mm thick; incl. 1pc. hole 13mm x 13mm and 1pc. hole 17mm x 59mm; fixed to rail over 1pc. steel bolt M12x35) and steel joint (U-profile; 220mm x 51,5mm x 22mm; 3mm thick; incl. 3pc. holes 14mm x 14mm; fixed to rail over 2pc. steel bolts M12x35);

- stainless steel fall arrest rail (drawing art.-no.: 200179): c-profile rail (as rail and as ladder); 31,50mm x 50mm; 3mm thick; with 24mm x 16mm arrest clips with a height of 8,5mm each 140mm; with 2 pc. 13mm x 35mm fixation square holes with a distance of 12mm to each other, each 140mm; incl. stainless steel fix stop device A=B (U-profile; 50mm x 53,50mm x 25mm; 3mm thick; incl. 1 pc. hole 13mm x 13mm; fixed to rail over 1 pc. stainless steel bolt M12x60); movable stainless steel stop device A (marked with "STOP up") and movable stainless steel stop devices B (marked with "STOP down") fixed to rail each over 1pc. stainless steel bolt M12x35, stainless steel brackets (160mm x 132mm x 78mm; 12mm thick; incl. 1pc. hole 13mm x 13mm and 1pc. hole 17mm x 59mm; fixed to rail over 1pc. stainless steel bolt M12x35) and stainless steel joint (U-profile; 220mm x 51,5mm x 22mm; 3mm thick; incl. 3pc. holes 14mm x 14mm; fixed to rail over 2pc. stainless steel bolts M12x35);

Fall arrester:

- Aluminium casting body with stainless steel and PA components; 8 PA guided wheels; spring-driven and speed-driven snap-in lever with stainless steel wheel mass; pin-attached stainless steel energy absorber (10mm thick); aluminium connector (DMM – A327) according to EN 362:2004/B;

Dimensions of the fall arrester:

Total Length: 125 mm;

Total Width: 38 mm (without pin);

Total Depth: 62 mm (without energy absorber and connector);

Maximum span:

- Aluminium fall arrest ladder: 1,68m

- hot dip galvanized steel fall arrest rail: 1,40m

- stainless steel fall arrest rail: 1,40m

Max. allowed distance

above top bracket:

- Aluminium fall arrest ladder: 450mm

- hot dip galvanized steel fall arrest rail: 267mm

- stainless steel fall arrest rail: 267mm

Minimum rated load: 40 kg



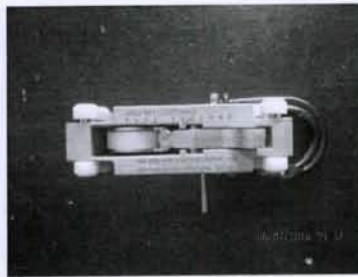
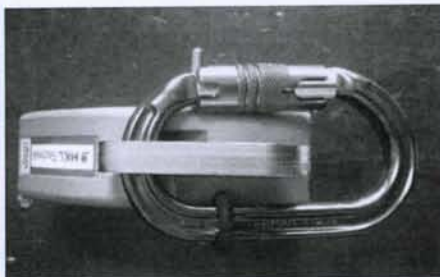
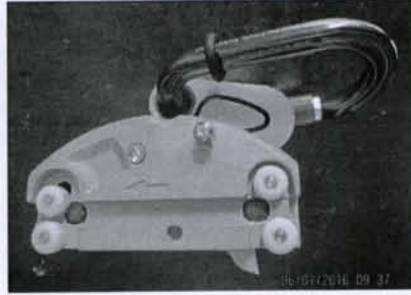
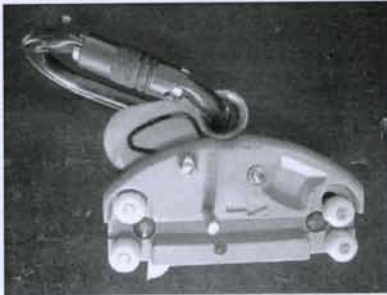
Product Service

Maximum rated load: 120 kg
Minimum Temperature: - 35 °C

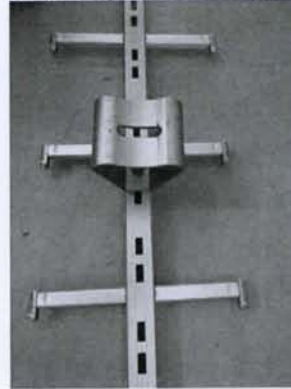
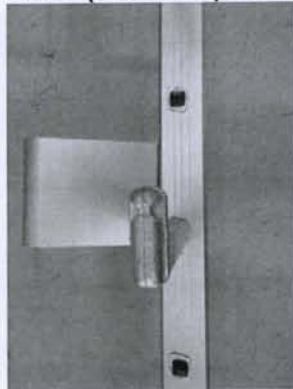
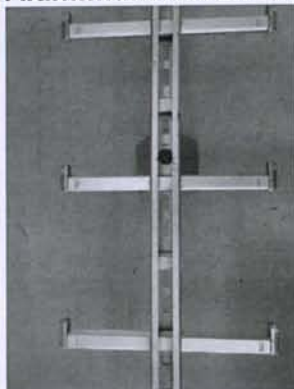
Marking: - on fall arrester: fitting position with arrow; manufacturer logo; manufacturing year; serial number; CE-marking; „read instructions“-pictogram; EN 353-1:2014; type; “use only with Twinstop® marked rails”;
User weight: min 40kg max.120 kg; inspection label
- on rail: “use only with Twinstop® fall arrester”;
the maximum number of user; the minimum distance between each user; manufacturer logo; manufacturing year; EN 353-1:2014; CE-marking; „read instructions“-pictogram;

Weight: - fall arrester (200000G): 846 grams

Fall Arrester 200000G

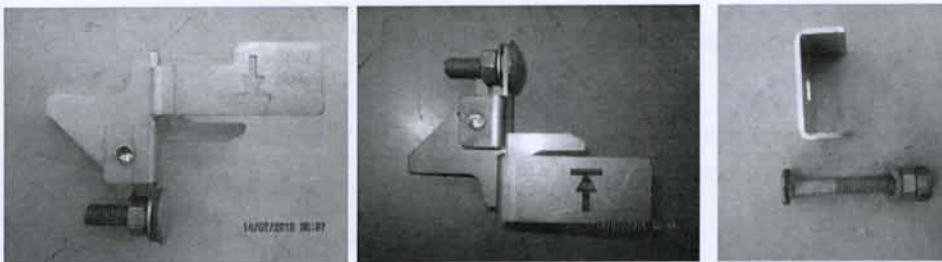
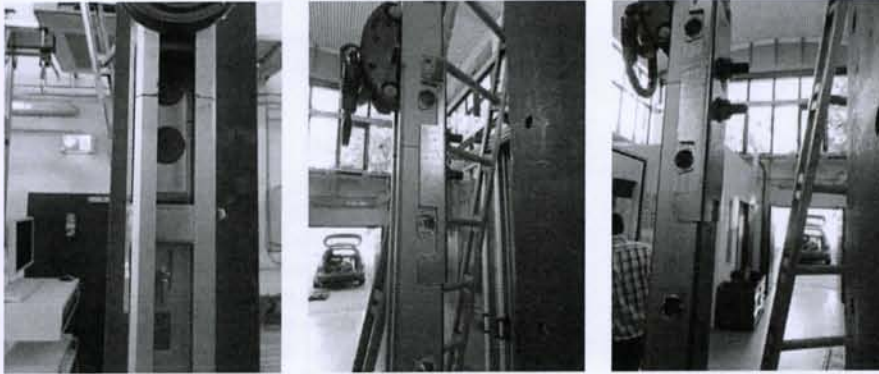


Aluminium fall arrest ladder (200277B) incl. joint, stop devices and brackets

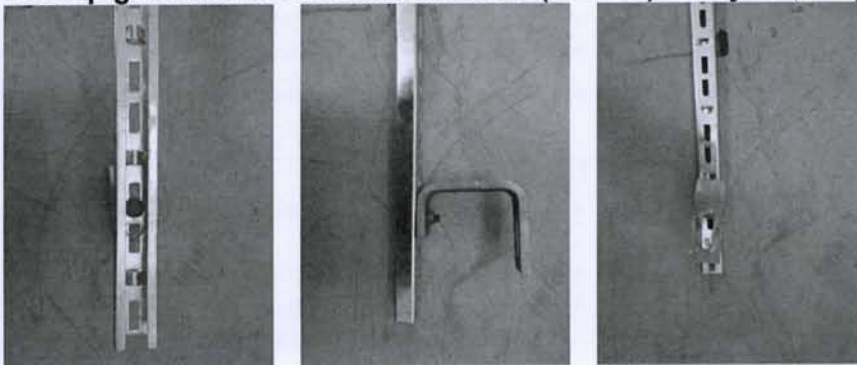




Product Service

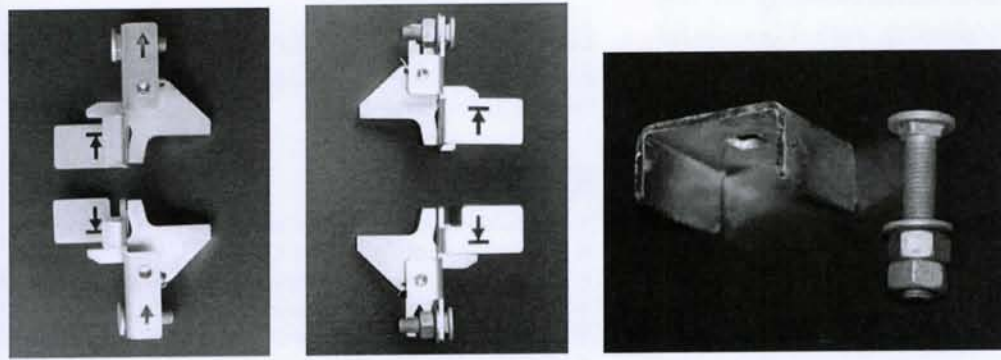


Hot dip galvanized steel fall arrest rail (200177) incl. joint, stop devices and brackets

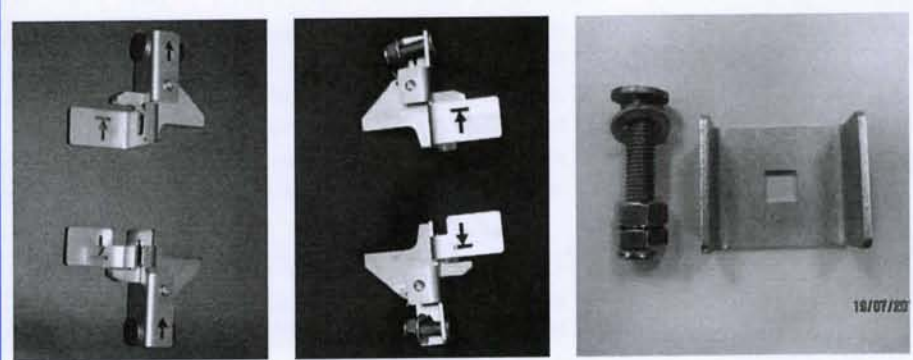
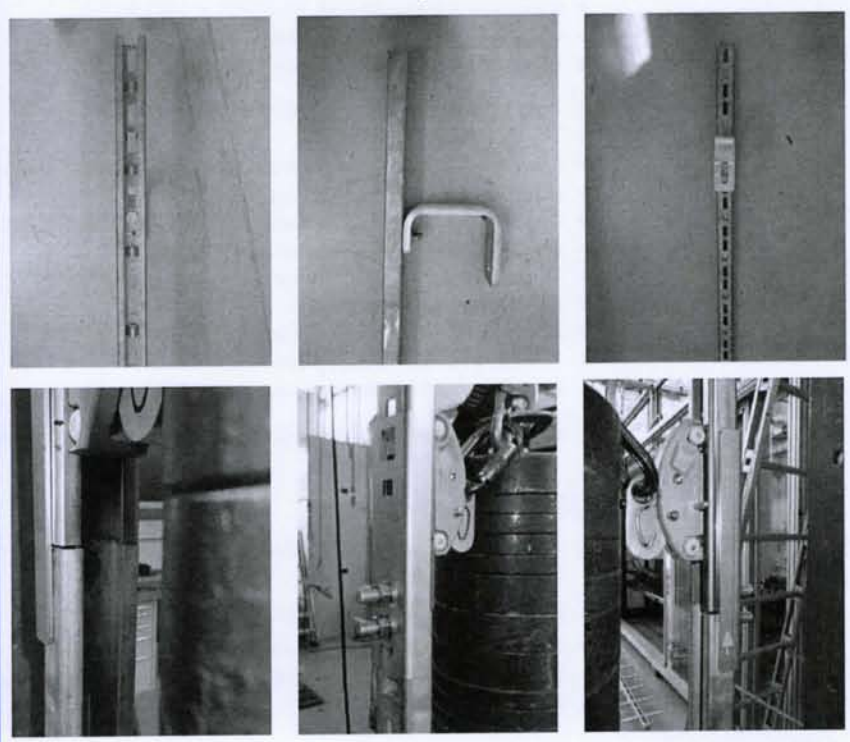




Product Service



Stainless steel fall arrest rail (200179) incl. joint, stop devices and brackets



Department: TCPGAR / V. Kron
Date: 2016-08-03